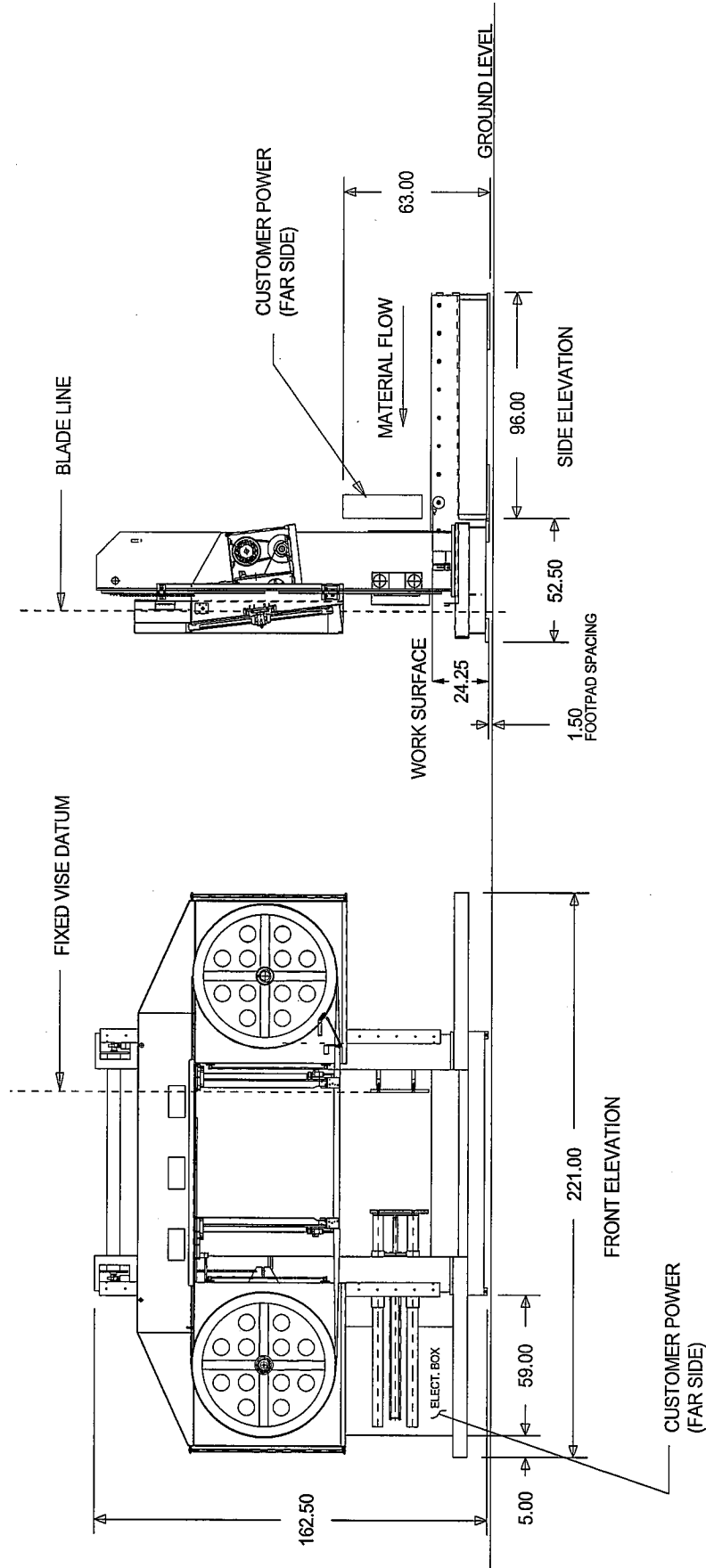


NOTE: HEM INC. WHOSE POLICY IS ONE OF CONTINUOUS IMPROVEMENTS, RESERVES THE RIGHT TO CHANGE SPECIFICATIONS, PRICE OR DESIGN AT ANY TIME WITHOUT NOTICE AND WITHOUT INCURRING OBLIGATIONS. ALL DIMENSIONS +/- .100"



CUSTOMER POWER (FAR SIDE)

NOTE: HEM INC. WHOSE POLICY IS ONE OF CONTINUOUS IMPROVEMENT, RESERVES THE RIGHT TO CHANGE SPECIFICATIONS, PRICE OR DESIGN AT ANY TIME WITHOUT NOTICE AND WITHOUT INCURRING OBLIGATIONS. ALL DIMENSIONS ARE ESTIMATES. FINAL DIMENSIONS MAY BE DIFFERENT.

HEM , INC.	
MID-AMERICA INDUSTRIAL DISTRICT	
P.O. BOX 1148 PRYOR, OK 74361	
H0014497	SHEET 1 OF 1
DC5353	W/8' INPUT
B-006516-553 A	

2007 COPYRIGHT HEM Inc. All rights reserved. No part of this document may be copied without written permission.